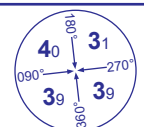
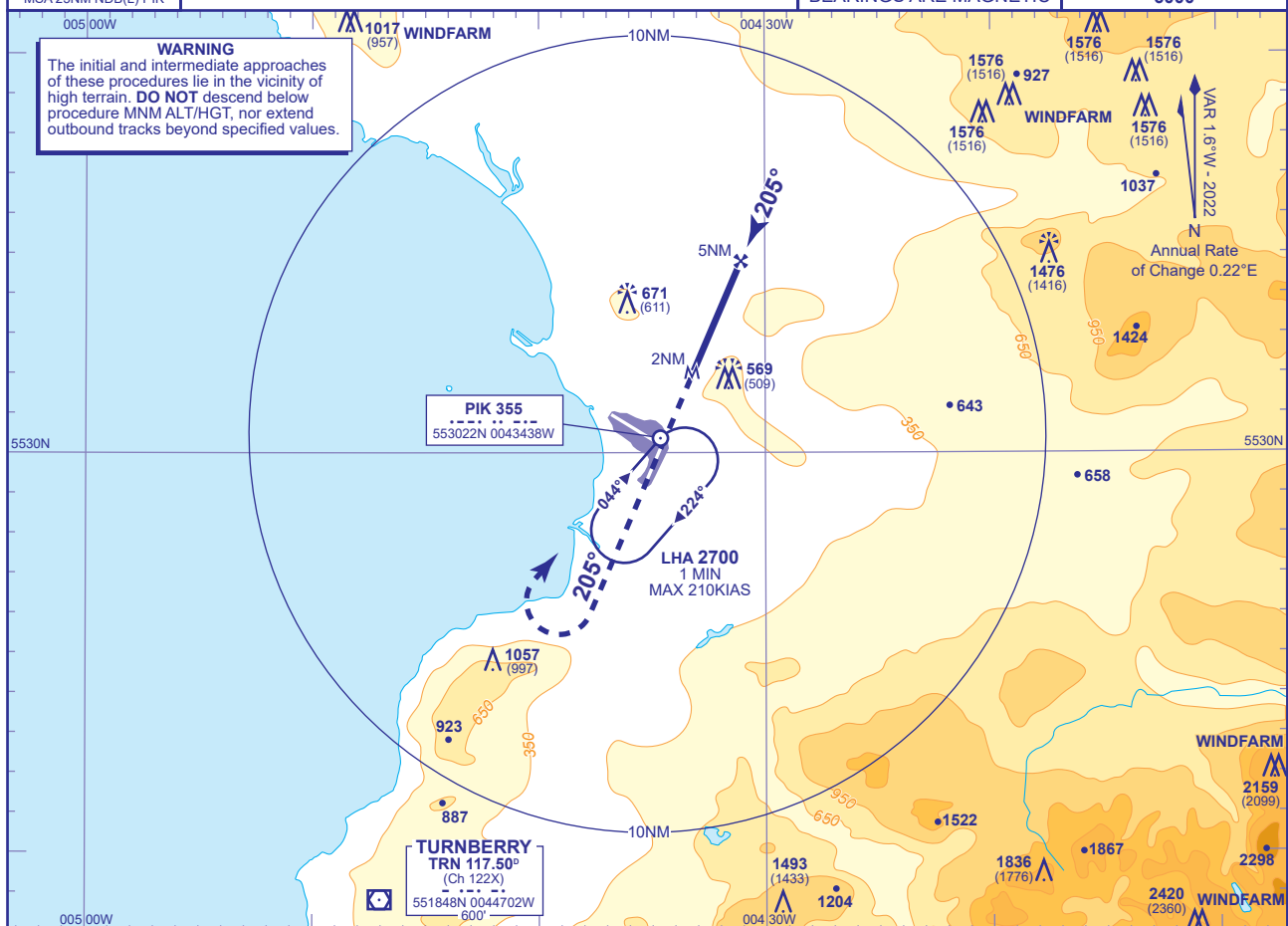


## INSTRUMENT APPROACH CHART - ICAO

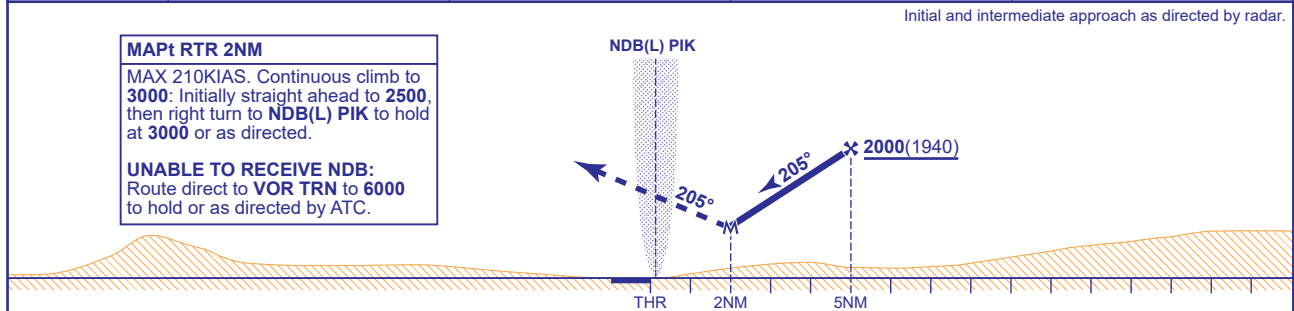
**PRESTWICK**  
**SRA RTR 2NM**  
**RWY 20**  
(ACFT CAT A,B,C,D)



APP	129.450	PRESTWICK APPROACH	AD ELEVATION	65	<b>SRA RTR 2NM RWY 20</b> (ACFT CAT A,B,C,D)
TWR	118.150, 127.155	PRESTWICK TOWER	THR ELEVATION	60	
RAD	129.450, 124.630	PRESTWICK RADAR	OBSTACLE ELEVATION <b>2420 AMSL</b> (2360) (ABOVE THR)		
ATIS	121.130	PRESTWICK INFORMATION			
			BEARINGS ARE MAGNETIC		TRANSITION ALTITUDE <b>6000</b>



RECOMMENDED PROFILE Gradient 6.39%, 390FT/NM				
NM	5.0	4.0	3.0	2.0
ALT(HGT)	2000(1940)	1610(1550)	1220(1160)	840(780)



Aircraft Category		A	B	C	D	Rate of descent	G/S KT	160	140	120	100	80
OCA (OCH)	Procedure	850(790)	850(790)	850(790)	850(790)		FT/MIN	1030	910	780	650	520
VM(C)OCA (OCH AAL)	Total Area	850(785)	900(835)	1100(1035)	1100(1035)							
	SW of RWY 12/30	850(785)	870(805)	1000(935)	1070(1005)							